

From data mess to data mesh with Keboola

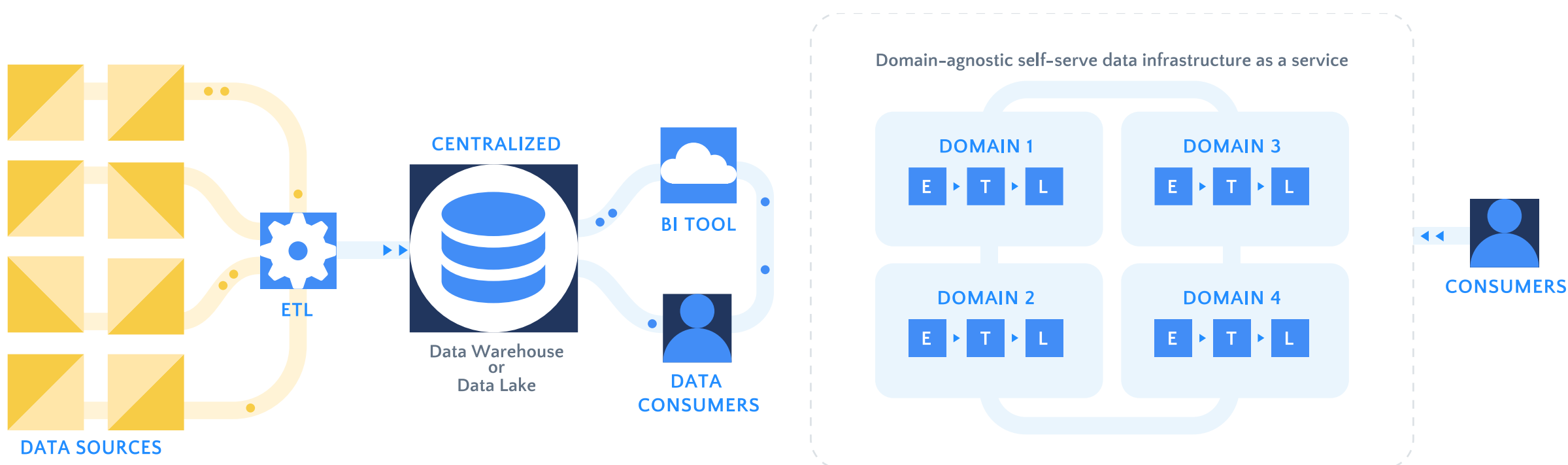
Reduce the complexity of your data stack, break free from maintenance tasks, and focus on delivering business value.



What is data mesh?

Data mesh is a concept developed in response to the challenges companies faced when scaling their centralized data architectures. This new architectural design pattern breaks down single repositories for all the customer support, manufacturing, marketing, sales, financials, and other data needs and puts them into their respective operational data units.

Centralized data architecture design VS Data mesh



How to implement data mesh?

Data mesh is not just about data — it is about organizational change and mindset. Companies need to rethink and restructure their workforce to align themselves with the principles of data as a product and domain-driven distributed data. When it comes to the architecture itself Keboola greatly reduces both complexity and time-to-value.

With no disparate services to handle various parts of the stack, Keboola decentralizes IT bottlenecks, and democratizes not just the access to data products but to their full life-cycle (including development, maintenance, and monitoring).

Keboola accelerates the data mesh deployment with out-of-the-box:



DOMAIN-AGNOSTICISM

Teams can work together on common data pipelines or separately on their own distributed pipelines, and converge when necessary.



DATA GOVERNANCE

Enterprise-level security standards, and SOC2 certification for peace of mind over the whole stack.



DATA PRODUCT CATALOG

As the means of publishing data products within the organization and ability to easily build on them further.



EXTENSIVE MONITORING

Every event, job, and user interaction is monitored to the finest granularity, to offer users an overview of the platform's functioning.



SCALABILITY

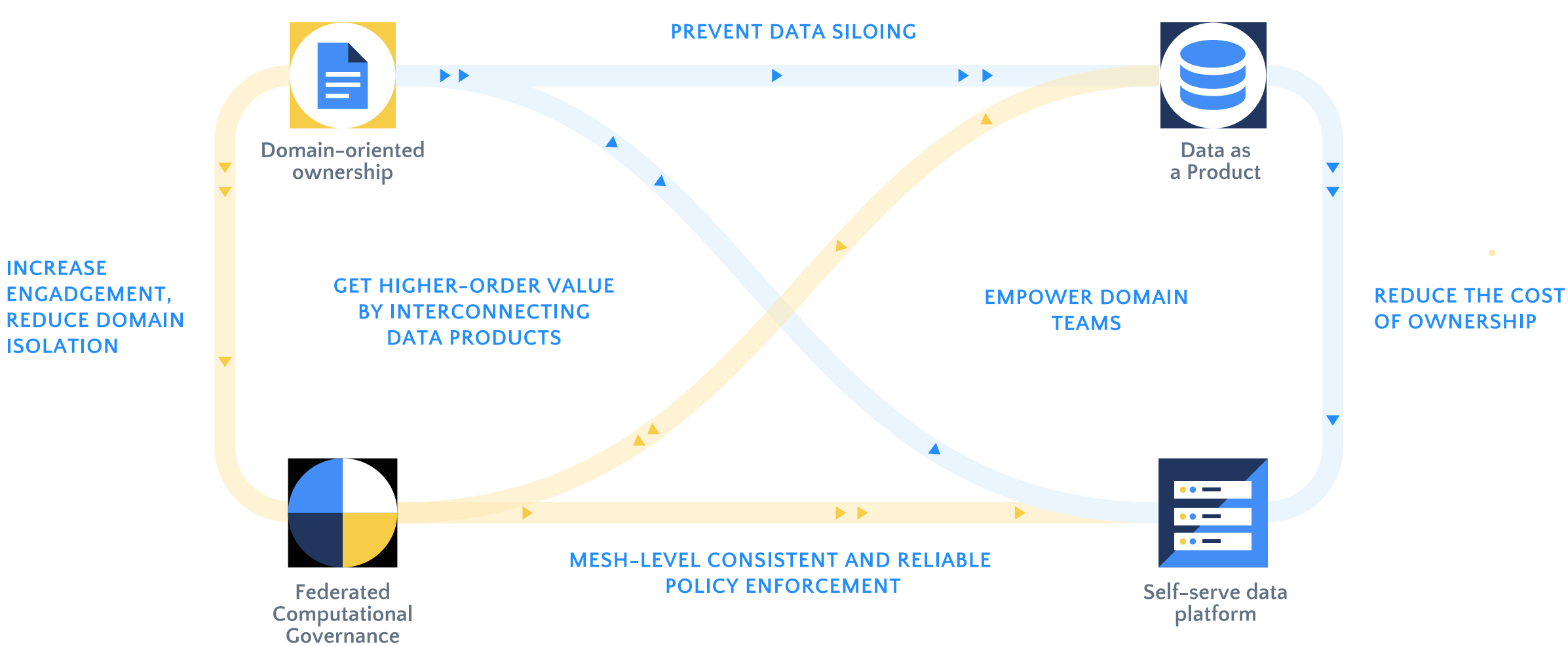
Keboola connects to over 250 sources and destinations, without additional engineering or maintenance needed. The APIs and open architecture offer limitless expansion, extension, and integration.



LIBRARY OF TEMPLATES

And framework for further accelerated development and delivery of use cases

Data mesh principles in a Data stack as a service



Data mesh works smoothly in Keboola with



Keboola has an always-free, no-questions-asked plan, so you can explore the power of the data mesh paradigm, and build a proof of concept without risks.

[Find out more at www.keboola.com.](http://www.keboola.com)



Keboola took a significant amount of pain out of not only better managing our data, but using it to our advantage for removing bottlenecks in our systems and creating better data people within our company.

Ilja Volf
Head of Data Analytics and BI, Mall Group